

## Director, Cancer Research Career Development & Education



**Ken Wright, PhD**

- Recruited to Moffitt in 1997 from UNC
- A record of service and leadership
  - Interim Co-Leader of Immunology (2013-16)
  - Vice Chair, Immunology Department
- Founding Director, Cancer Biology PhD Program (est. 2002)
- Founding member of the national Cancer Biology Training Consortium (est. 2005)
  - Served on its Executive Board for 3 years
- Funding
  - U54 Ponce Health Sciences/Moffitt Partnership (PI)
  - R01 on Natural Killer Cell Regulation by PRDM1 & IRF4/8 (PI)
  - R01 targeting SIRT1 in Mantel Cell Lymphoma (Co-PI)
- Over 75 publications

## Cancer Research Career Enhancement and Related Activities (CRCERA)

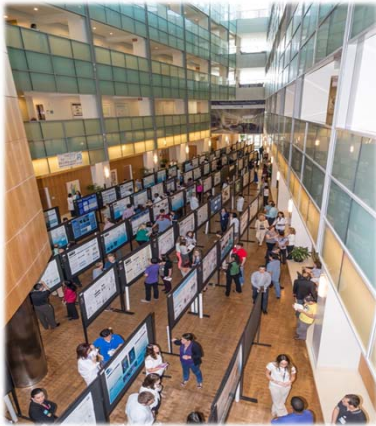
**Kenneth Wright, PhD**

Director, Cancer Research Career Development and Education (CRCDE)

Senior Member, Immunology Program



## Cancer Research Career Enhancement & Related Activities (CRCERA)



**Coordinate**  
**Integrate**  
**Innovate**  
**Report**

**on the spectrum of educational activities at the  
Cancer Center**

## CRCERA Specific Aims

- Build synergy across the cancer center at all career stages enhancing the scientific impact of each Program
- Facilitate each individual to maximize their cancer research and cancer care career development
- Expand diversity and health equity in the career development pipeline

## Director of the CRCDE

### Vision

- *...to become a destination site for cancer education and career development; fostering significant advancement in the detection, prevention, and cure of cancer.*

## Director of the CRCDE

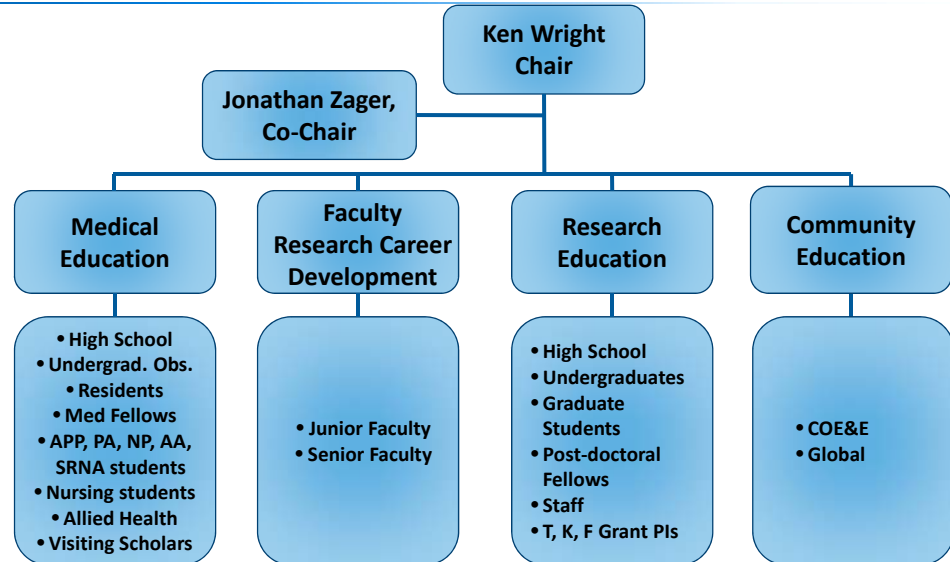
### Mission

- *...to be the coordinating center of educational activities at Moffitt, facilitating integration, synergy, and developing innovative approaches to education, training, and career development across all sectors of the cancer center and CCSG programs.*

# Education Council

## Membership includes:

- ~20 members
- Faculty
- All PIs of education related grants
- 5 Admin. Personnel
- All trainee career levels & activities represented



# Educational Activities

- High school
- Undergraduates
- PhD and Masters students
- Post-doctoral fellows
- Junior faculty
- Staff



- Pre-med, High school
- Undergraduate Medical Ed
- Residents and Fellows
- APP, Nursing
- Allied Health, Visiting Scholars
- Clinician Scientist junior faculty

## Training and Career Development Grants

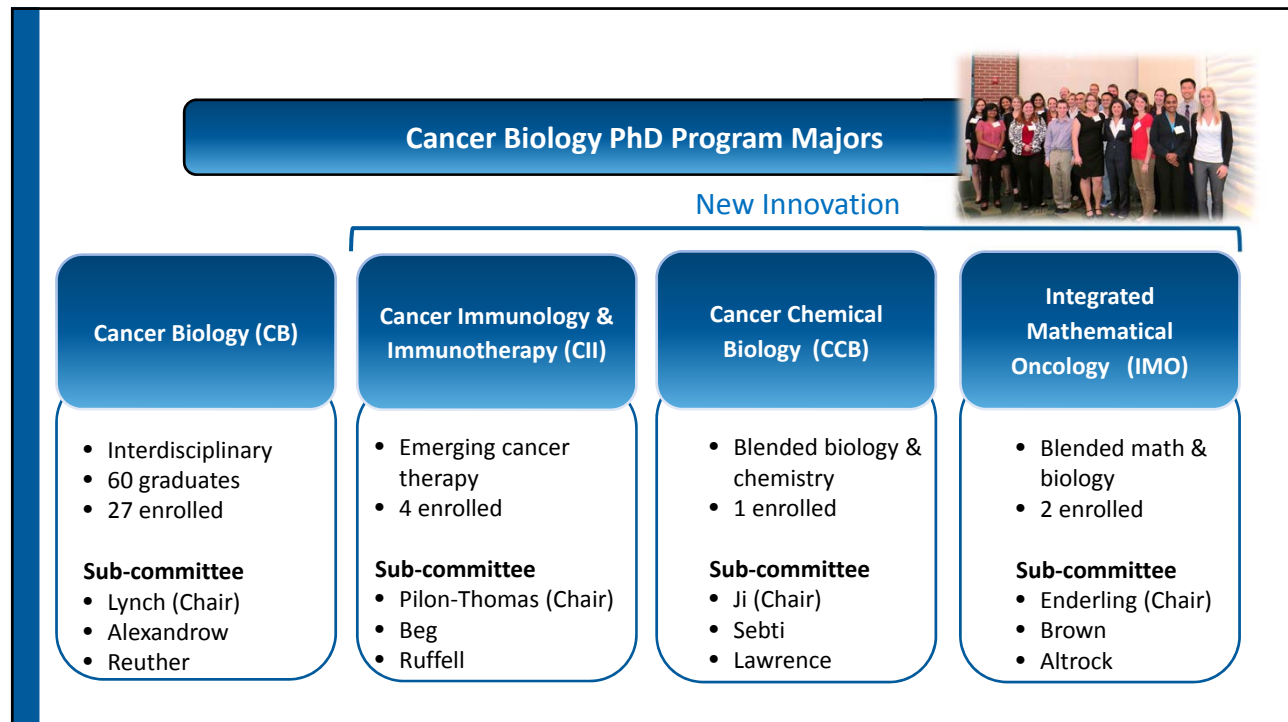


Every program is supported by funded training grants

Mechanism	Number Active (program)	Number Pending (program)
T32	1 (CE)	2 (CBE, CE)
R25	3 (HOB)	2 (All, HOB)
K	7 (CBE, CE, IMM, HOB)	5 (CBMM)
K99/R00	1 K99 (CBMM) 4 R00 (CBMM, HOB)	1 (CBMM)
F99/K00	1 F99 (CBE)	1 (IMM)
F31	1 (IMM)	2 (CBMM, IMM)
P20	1 (HOB)	0
U54	2 (All, CBE)	0
R50	1 (CBMM)	1 (IMM)
Diversity Supplements	3 (CBE, CE)	





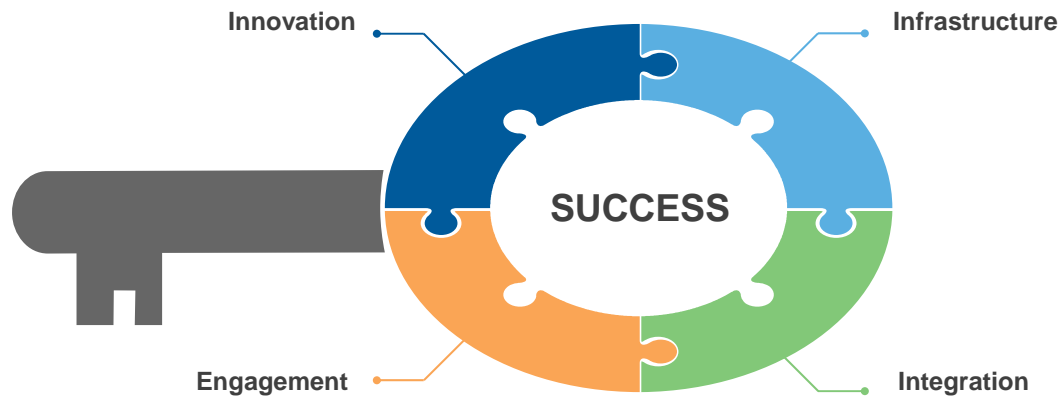


## Patients/Caregivers - Researchers Forum

- Enhance understanding of the patients and caregivers cancer experience
- Promote compassion/perspective, sense of relevance/purpose
- Stimulate ideas and productivity in our researchers
- Develop communication skills with a lay and patient audience

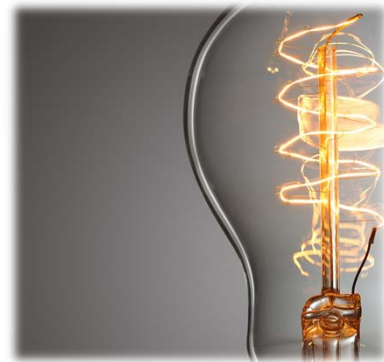


## Key to CRCDE



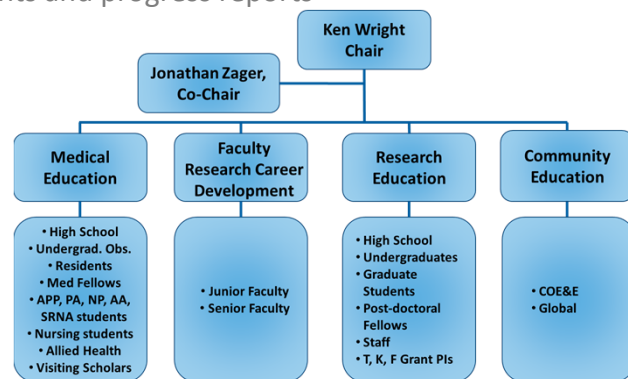
## Innovation

- Mentoring across the career spectrum
- Strengthen translational training
- Expand into unique PhD Programs
- Build diversity through enhanced recruitment, retention & health equity training



# Infrastructure

- Office
- Central repository of curated grant listings, templates, and examples
- Develop real-time trainee tracking
  - data tables for training grants and progress reports
- Alumni Database
- Education Council



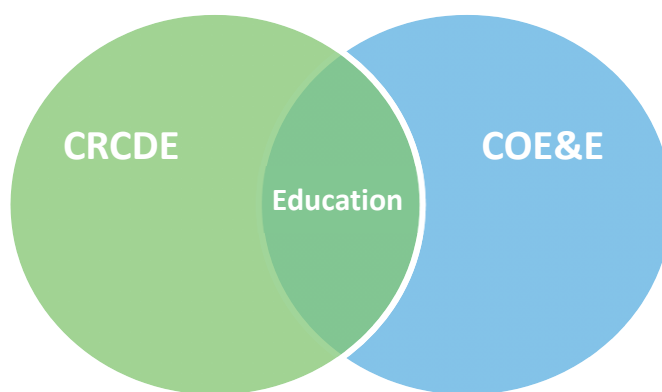


## Integration

- ☐ Cancer Biology and Evolution
- ☐ Cancer Epidemiology
- ☐ Chemical Biology and Molecular Medicine
- ☐ Health Outcomes and Behavior
- ☐ Immunology
  
- ☐ Centers of Excellence
  
- ☐ Clinical Education



## Synergy with Community Outreach, Engagement & Equity



Engage in community outreach events  
Educational workshops

## Goals for the First 6 Months

- Setup & staff the CRCDE office
- Define the metrics to be used in assessing success
- Assess numbers & activities of the current training/education groups
- Engage stakeholders in dialog to assess needs
- Set high priority goals for second 6 months



## Questions

- Are there perceived gaps in the training spectrum that need to be addressed?
- Are there suggestions as to the best metrics to demonstrate success?
- What are effective ways for the CRCDE and COE to interact?

## Training and Career Development Grants



Every program is supported by funded training grants

Mechanism	Number Active	Number Pending
T32	1	2
R25	3	2
K	7	5
K99/R00	1 K99 4 R00	1
F99/K00	1 F99	1
F31	1	2
P20	1	0
U54	2	0
R50	1	1
Diversity Supplements	3	